



**print PARK**  
*premium folding cartons*

# Key Figures

MIS integrated planning

Online Data Collection from production

Traceability from board to finished product

Export minded organization

Bilingual sales team (English, French, German)

Nearly %80 direct and indirect export sales experience

Fast lead times (starting from 2 weeks)

Internal Quality and R&D Laboratory

Flexible and cost effective especially at;

Small and medium size orders

High added value products



## Research & Development

Product development and creative assistance

Graphic effects and finishing illustration

3D virtual simulation

Prototyping and pre-sampling

# Innovation

Digital Luxury – Hot Foil and Spot UV

Eco Luxury – Foil Free Metallized Substrate

Inline Cold Foil Printing

Rhinestone Application



*Digital Luxury*

**ECO LUXURY**

**added value**



## Quality Assurance

Quality Management System

Social Responsibility

Environment Sustainability

Corporate Ethical Code



# Sectors

## Beauty & Cosmetics



## Wine & Spirits



## Food & Beverages



## Textile & Fashion



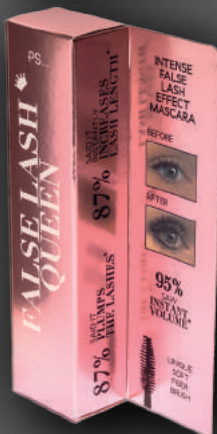
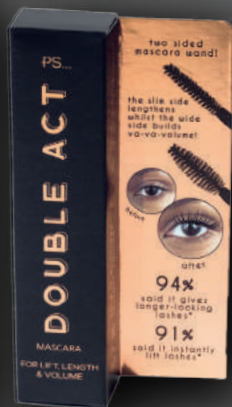
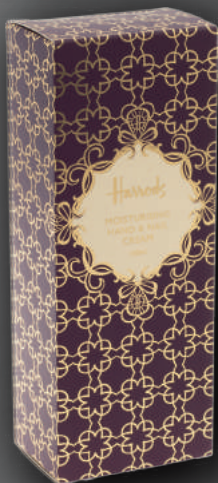
## Non-Food



## Chocolate & Confectionery

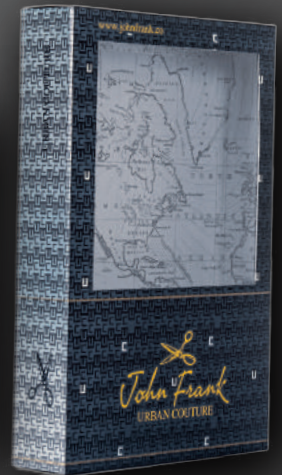




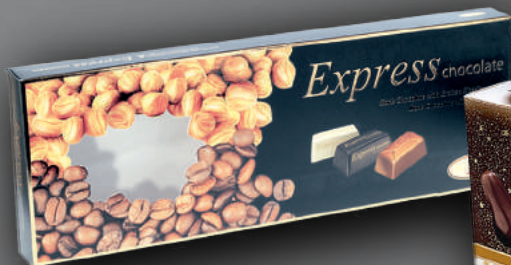




# Portfolio









Fuar Street No:31, 34521 Beylikduzu, Istanbul / Turkey  
+90 212 482 10 10  
[www.printpark.com](http://www.printpark.com)

**Member of Global Packaging Alliance**

